

Company growth allows firm to meet needs of customers

FORT LORAMIE — During the year 2007, Elite Enclosure Co., LLC continued to experience growth both in physical size and employment. Now well into its 13th year of operation, the company has improved its ability to meet the needs of its customers, primarily the automotive sector, but others as well.

According to Doug Pottorf, company president, "our growth has been extremely good during the past three years and I am very optimistic about the future."

His report continues:

Every year we set goals for ourselves to improve our quality and company image, and increase the services that we can offer. We continue to maintain our ISO 9001& 14001 certification.

During the past year, we increased our design staff to three full time design engineers. We started years ago using the more conventional AutoCad design software and about 4 1/2 years ago, we started training and using Catia V5. Catia V5 is a high level solid modeling Computer Aided Design (CAD) software that originally started out being used in the aerospace industry. In more recent years, however, the automotive industry gradually began to use it as well.

Our ability to take a customer's idea, convert that idea into a tangible vision in our design software, make a working prototype from the drawings that our design software provides, straight into full blown production is being more and more recog-

nized by our customer base.

Along with some additional new equipment slated for this year that will help us be more productive, we will be focusing our efforts to better meet the schedule requirements of our customers.

Elite Enclosure Co. is located in the Fort Loramie Industrial Park and currently has approximately 40,000 square feet of manufacturing space and 45 employees (and still hiring). The company specializes in the development and manufacturing of material handling equipment and systems (i.e., lifting devices, shipping and systems racks, conveyance systems, wire basket containers, etc.).

If it requires the customer's product to be moved from point "A" to point "B,"



SDN photo/ NAME

THIS IS an aerial view of the Elite Enclosures Co., which is located in the industrial park in Fort Loramie.

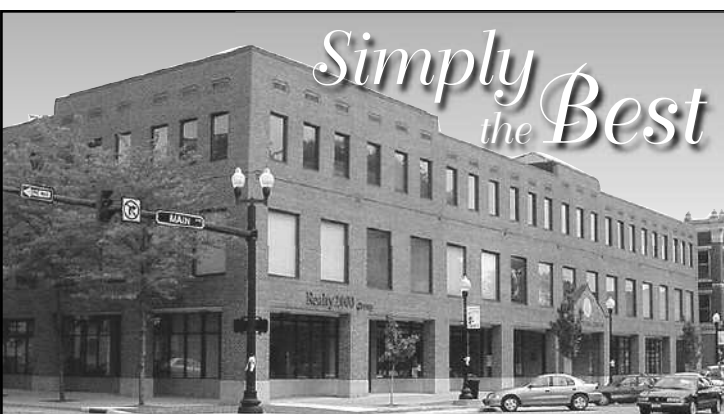
we like to get involved.

Elite Enclosure Company's goal is to become one of the best in the business and be recognized as a

leader in its field.

Acknowledging all indicators, we anticipate continued strong growth into 2008.

Progress



Simply the Best

Centerview Center • 100 S. Main Ave., Suite 101 • Sidney

Buyers & Sellers
National
Relocation Service



937-492-8055 • 800-514-8096
www.realty2000group.com

Tim Gleason, Broker



CELEBRATING 44 YEARS!

Choose the *Original*

Wissman Door Sales, Inc.

A Name you know. A Company you can trust.

937-295-2300
Russia

937-498-7023
Sidney

937-339-4299
Troy

419-586-3700
Celina

- Garage Doors
- Entry Doors
- Windows
- Patio Doors
- Electric Garage Door Openers